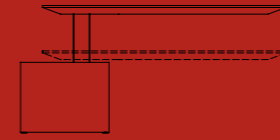


Gravity



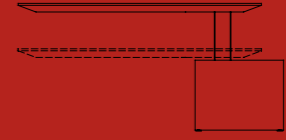
.mdd

**Designed
to combine
technology and
visual appeal –
with its height
adjustment
and cantilever
worktop Gravity
is a next-
generation desk.**



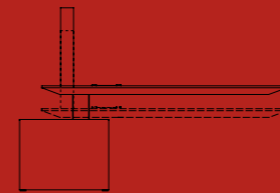
GAV1P

desk with managerial storage



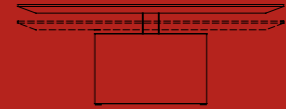
GAV1L

desk with managerial storage



GAV10

multimedia stand



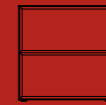
GAV5

conference table



GAV16

storage



GAV15

storage



GAV6

coffee table

Gravity

It's against gravity but still sturdy and comfortable – Gravity takes the idea of an executive desk to a whole new level.

With a large worktop supported on one leg and structure that seamlessly blends into the form, it brings a levitating surface to mind. Inspired by the essence of modern architecture,

the minimalist form of Gravity is fully integrated with technology. Electric height adjustment system ensures ergonomics. Working position can be smoothly changed from seated to standing, so that you can work at your highest potential. Featuring a handy storage, it's a highly functional solution designed with contemporary leaders in mind.



Designer

Dymitr is a Polish designer. He graduated from Gdansk University of Technology, with Faculty in Architecture and Urban Planning. In 2006 he moved to London and 4 years later he travelled to Asia, where he decided to settle. He gained experience while working with renowned designer companies and currently runs his own business in Singapore.

He's an architect, interior and furniture designer. His projects came to life in most of Asian countries: Singapore, Indonesia, Malaysia, China, India, Burma,

Vietnam, Taiwan and Philippines. The list of his clients is ranging from prestigious firms and other dynamically growing enterprises to private investors who want innovation.

Dymitr works in many areas of business, he designs modern desks as well as luxurious hotels or private residences. He perfectly uses his extensive knowledge of architecture and applies it in his furniture design and product creation.

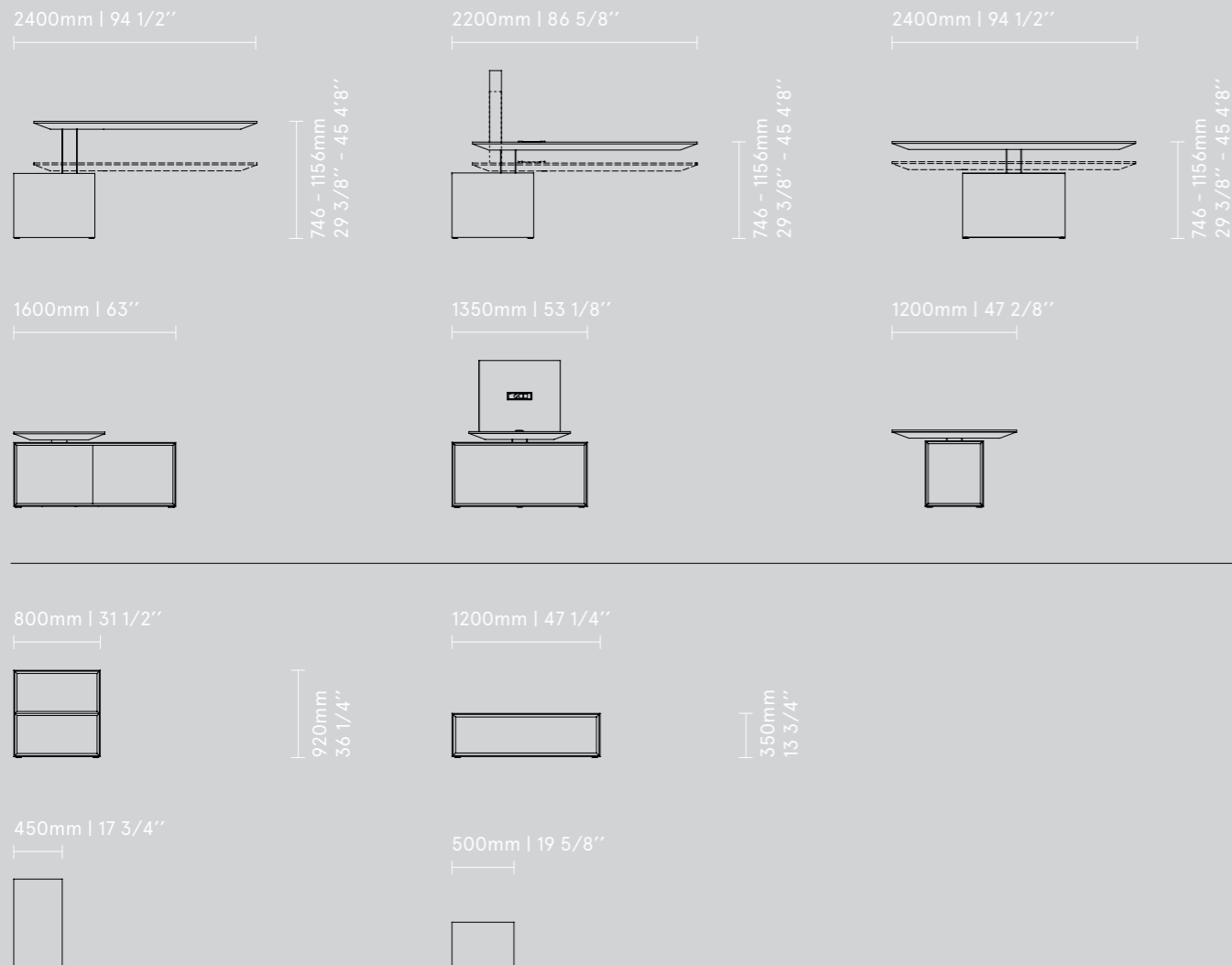


Gravity

Whether furnishing a spot for one-on-ones or team meetings, it's best to pick smart solution that fuels the creative process. Designed to both please the eye and enhance efficiency, the Gravity conference table and multimedia station as well feature height adjustment. Such a solution allows you to adjust the worktop up and down, providing users with

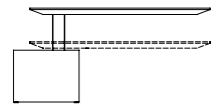
the autonomy to perform however best suit their task. Built-in sockets increase its functionality. Blurring the boundaries between work and home, the Gravity coffee table allows for a more laid-back atmosphere. Bookcase and storage with drawers complete the look. These modular units can stand alone or be combined, so that they fit virtually any spatial situation.

mdd.eu



mdd.eu





GAV1P
 2400 / 1600 / 746
 94 1/2" / 63" / 29 3/8"

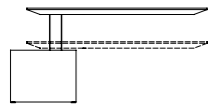


GAV16
 800 / 450 / 920
 31 1/2" / 17 3/4" / 36 1/4"



GAV6
 1200 / 500 / 350
 47 1/4" / 19 5/8" / 13 3/4"





GAVIP
 2400 / 1600 / 746
 94 1/2" / 63" / 29 3/8"

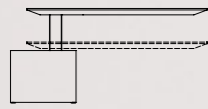


GAV16
800 / 450 / 920
31 1/2" / 17 3/4" / 36 1/4"



GAV15
800 / 450 / 920
31 1/2" / 17 3/4" / 36 1/4"





GAV1P
2400 / 1600 / 746
94 1/2" / 63" / 29 3/8"

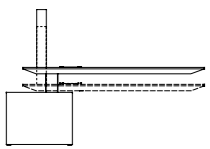


GAV16
800 / 450 / 920
31 1/2" / 17 3/4" / 36 1/4"



GAV15
800 / 450 / 920
31 1/2" / 17 3/4" / 36 1/4"





GAV10
 2200 / 1100 / 750
 86 5/8" / 43 1/4" / 29 1/2"

Gravity Colours



Images in the catalogue may show products slightly differently from the original version. Colours of shown materials may differ from the real ones. The producer reserves a right to introduce change of colours and patterns of the presented products. The manufacturer reserves the right to introduce alterations to the products and their marking without changing

the general design. The present catalogue does not constitute a legally binding offer and is published solely for information purposes. Order may be placed only on the basis of the current price lists, available at authorised distributors.

